

6270000

6271500

E&L NICKEL MOUNTAIN



E-W Section

Historical adit



E&L Main Zone

Lower Discovery Zone

Unexplained ZTEM response in valley

1800 Resistivity Isoshell

Eastern Extension Zone

1400 Resistivity Isoshell

Response trending to E&L Eastern Extension Zone



1500 m

0 m

500

1000

1500 m



E&L NICKEL MOUNTAIN: N-S ZTEM SECTION

West-facing section: 396098.49 m, 200 m thickness

Conductivity (S/m) (10^5)

>80 60 40 20 0



1400 1800

Resistivity (Ohmm)

395000

396000

397000

398000



2000 m

1000 m

0 m

E&L WEST
VTEM Response

E&L NICKEL MOUNTAIN

N-S Section

Bedrock samples
Up to
4.29% Cu,
49.4 g/t Ag
3.38% Zn

E&L gabbro mineralized float boulders
Up to 0.88% Ni

E&L Main Zone

Lower Discovery Zone

Eastern Extension Zone

1600 Resistivity Isoshell

Response trending to E&L West

Potential for intrusion in feeder zone

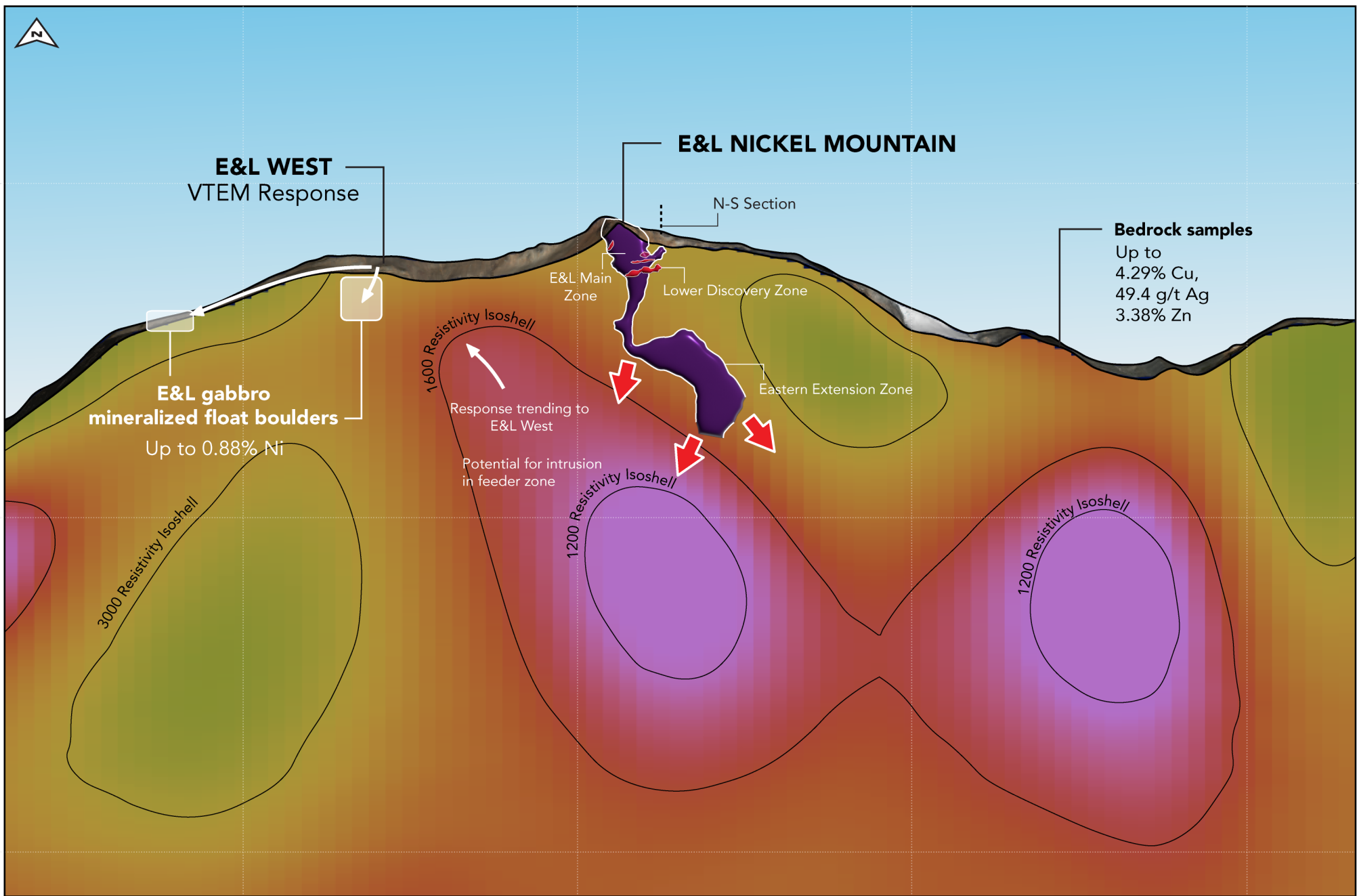
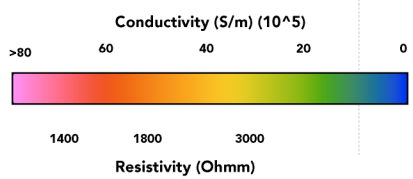
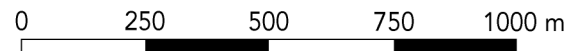
1200 Resistivity Isoshell

1200 Resistivity Isoshell

3000 Resistivity Isoshell

E&L NICKEL MOUNTAIN: E-W ZTEM SECTION

North-facing section: 6271484.82 m, 200 m thickness



6270000

6272000

6274000



E&L WEST A
VTEM Response

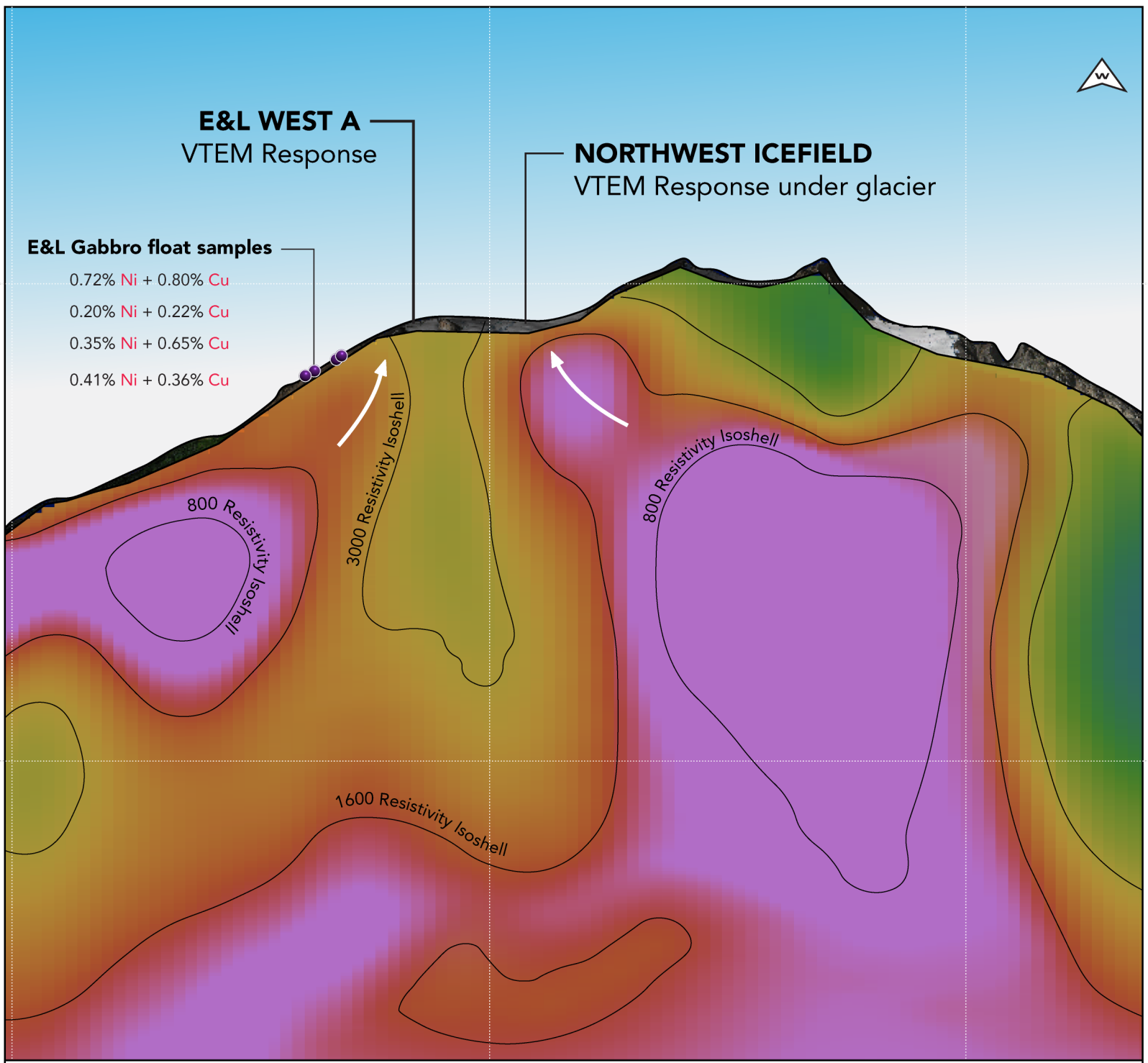
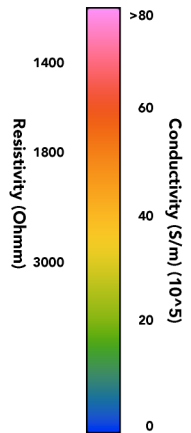
NORTHWEST ICEFIELD
VTEM Response under glacier

2000 m

E&L Gabbro float samples

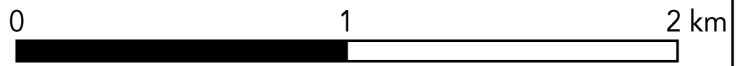
- 0.72% Ni + 0.80% Cu
- 0.20% Ni + 0.22% Cu
- 0.35% Ni + 0.65% Cu
- 0.41% Ni + 0.36% Cu

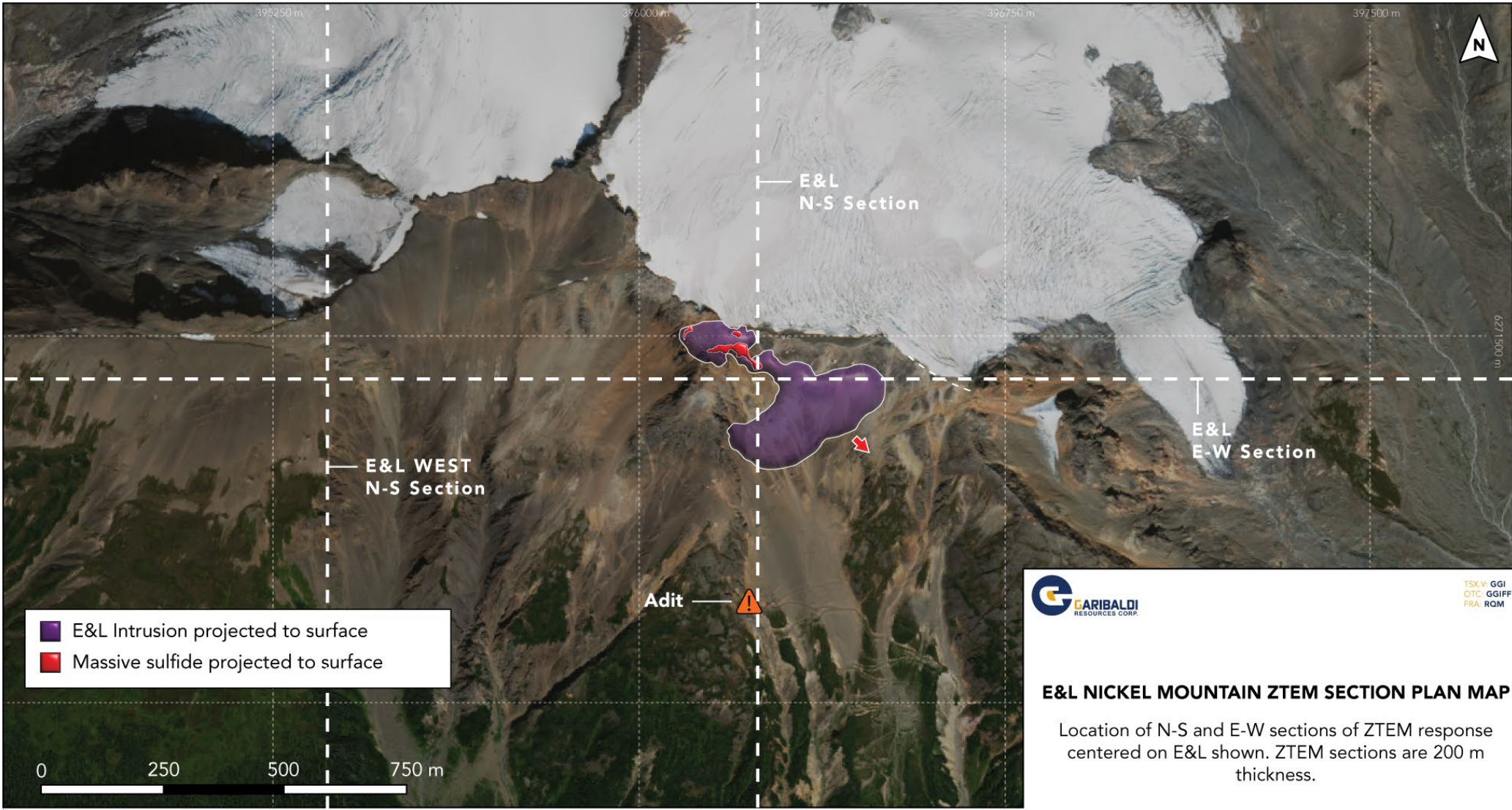
0 m



E&L WEST: N-S ZTEM SECTION

West-facing section: 395410.62 m, section 200 m thickness





E&L Intrusion projected to surface
 Massive sulfide projected to surface



TSX V: GGI
 OTC: GGIFF
 FRA: ROM

E&L NICKEL MOUNTAIN ZTEM SECTION PLAN MAP

Location of N-S and E-W sections of ZTEM response centered on E&L shown. ZTEM sections are 200 m thickness.

E&L NICKEL MOUNTAIN: 2022 ZTEM SECTION PLAN MAP